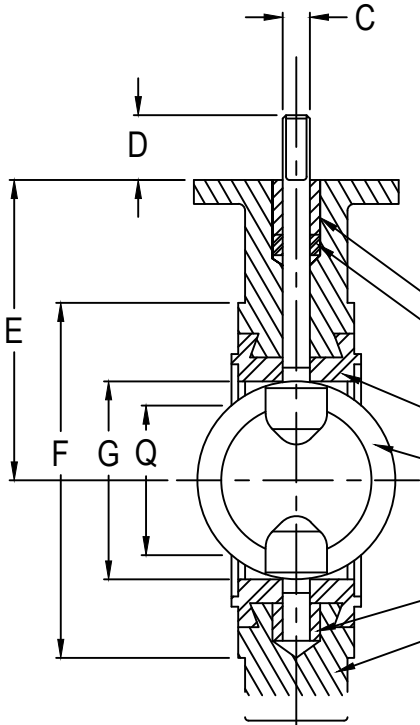
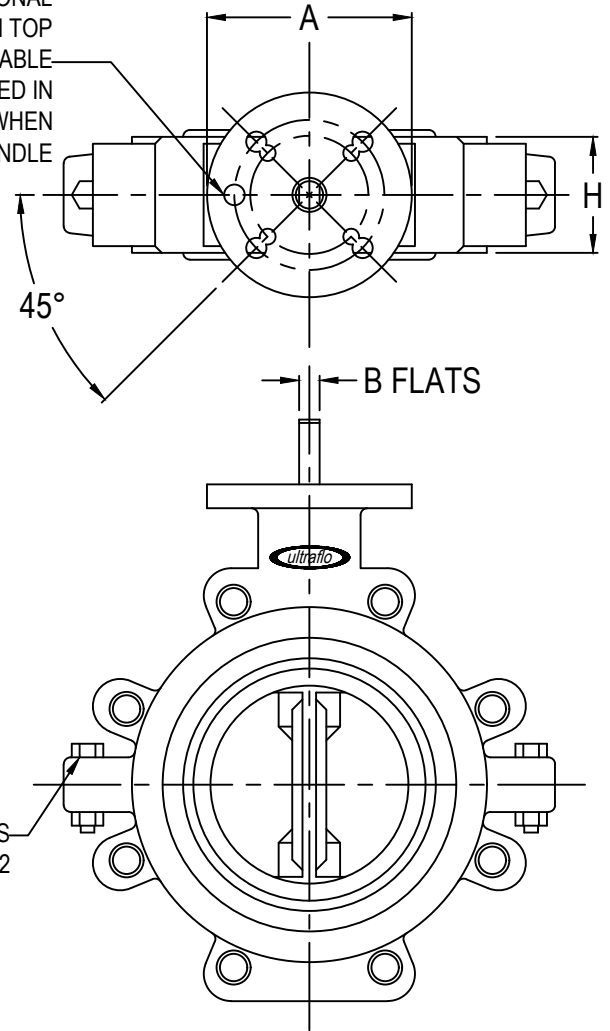


ATTENTION PLEASE CHECK THE ULTRAFLO WEBSITE AT www.ultraflovalve.com TO ENSURE YOU HAVE THE MOST RECENT COPY OF THIS DOCUMENT

NOTES:

1. ALL DIMENSIONS IN INCHES
2. VALVE WITH FULLCUT DISC CARRIES A PRESSURE RATING OF 150 P.S.I.
3. VALVE O.D. AND FLANGE BOLT CIRCLE MUST SHARE COMMON CENTER LINE. VALVE DESIGN TO BE PLACED BETWEEN ANSI 125 OR 150 LB FLANGES (NOT FOR USE WITH ASA 250 OR 300 LB FLANGES).
4. TEFLON LINED VALVES ARE UNSUITABLE FOR SLIP-ON FLANGES
5. Q DIMENSION: IS THE MINIMUM FLANGE OR PIPE I.D. TOLERABLE FOR PROTECTION OF DISC SEALING EDGE WHILE OPERATING CENTERED BETWEEN FLANGES.

2"-6" HAVE AN ADDITIONAL 5TH HOLE DRILLED IN TOP PLATE THAT WILL ENABLE VALVE TO BE LOCKED IN THE CLOSED POSITION WHEN USING A LOCKING HANDLE



NAME	NUMBER REQUIRED	MATERIAL	PART NUMBER
UPPER BUSHING	1		
PACKING	1		
SEAT	1		
DISC-STEM	1		
LOWER BUSHING	1		
BODY	1		

VALVE DIMENSIONS										TAPPED LUG DATA			TOP PLATE DRILLING						
SIZE	A	B	C	D	E	F	G	H	Q	WT. LBS	B. CIRCLE	HOLES	TAP	ISO DRILLING			STD DRILLING		
														B. CIRCLE	HOLES	HOLE DIA.	B. CIRCLE	HOLES	HOLE DIA.
2	4.000	.375	.563	1.250	4.063	4.125	2.125	1.625	1.531	7.5	4.750	4	.625-11UNC	2.760	4	.375	3.250	4	.438
3	4.000	.375	.563	1.250	5.000	5.375	3.000	1.750	2.689	11.0	6.000	4	.625-11UNC	2.760	4	.375	3.250	4	.438
4	4.000	.438	.625	1.250	6.000	6.875	4.125	2.000	3.719	17.0	7.500	8	.625-11UNC	2.760	4	.375	3.250	4	.438
5	4.000	.438	.625	1.250	6.000	7.750	5.188	2.125	4.813	21.0	8.500	8	.750-10UNC	2.760	4	.375	3.250	4	.438
6	4.000	.500	.750	1.250	6.625	8.750	6.125	2.125	5.813	26.0	9.500	8	.750-10UNC	2.760	4	.375	3.250	4	.438
8	6.000	.625	.875	1.250	8.313	11.000	8.125	2.500	7.813	42.0	11.750	8	.750-10UNC	4.020	4	.438	5.000	4	.563
10	6.000	—	1.125	2.000	9.125	13.375	10.125	2.500	9.906	65.0	14.250	12	.875-9UNC	4.020	4	.438	5.000	4	.563
12	6.000	—	1.125	2.000	10.625	16.125	12.094	3.000	11.844	95.0	17.000	12	.875-9UNC	4.020	4	.438	5.000	4	.563

10" AND 12" C SIZE STEM CONNECTION DIAMETER WITH 1/8" X 1/4" KEYWAY.

ZONE	REV	DATE	BY	APP'D	ECN	DESCRIPTION
A4	3	07/22/19	TAL	JPL		REMOVED 2.5 INCH VALVE
A1	2	05/06/10	DSS	CJH	374	UPDATED TITLEBLOCK
E4	1	07/06/09	CJH	CJH		ADDED TEFLON NOTE

		Ultraflo Corporation A Subsidiary of Bray International, Inc.		#8 Trautman Ind. Dr. Ste. Genevieve, Mo. 63670 800-950-1762
		DRAWN BY TJM CHECKED TJM	DATE 05/25/98 DATE 05/25/98	
PART: 393 VALVE TAPPED LUG BODY, ONE-PIECE DISCSTEM, EPDM, NITRILE, VITON, BUNA OR TEFLON SEAT			ECN:	DWG: 390/393-3